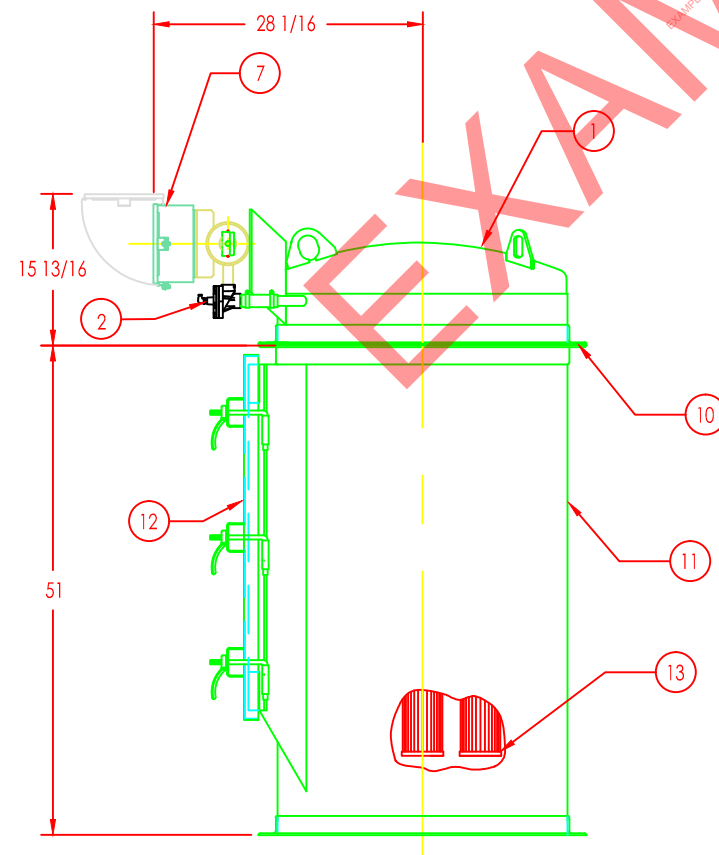
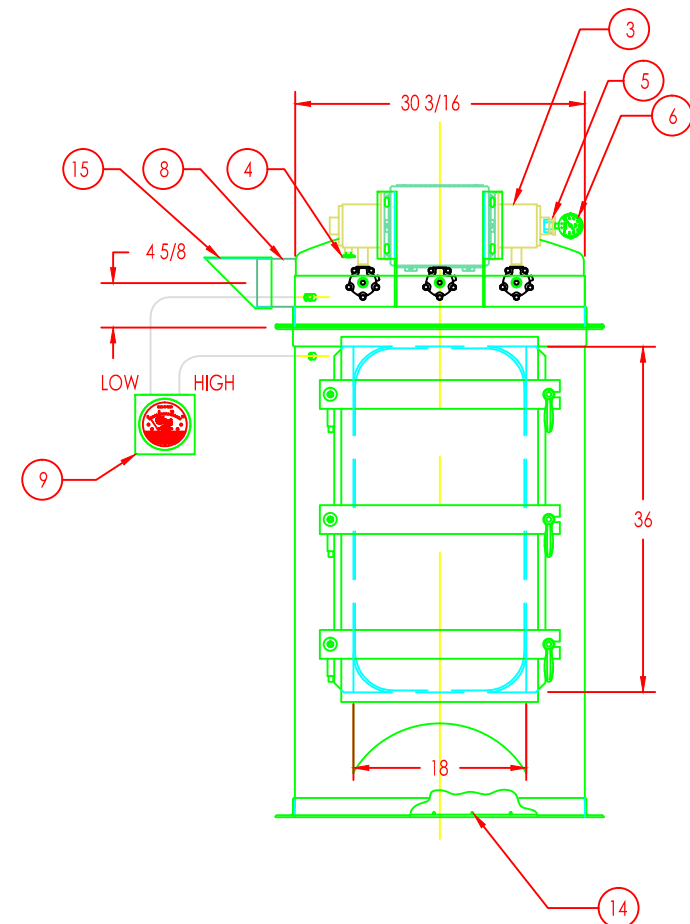
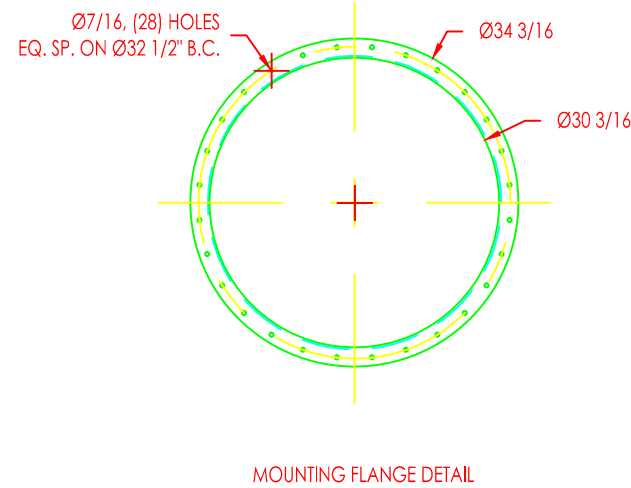
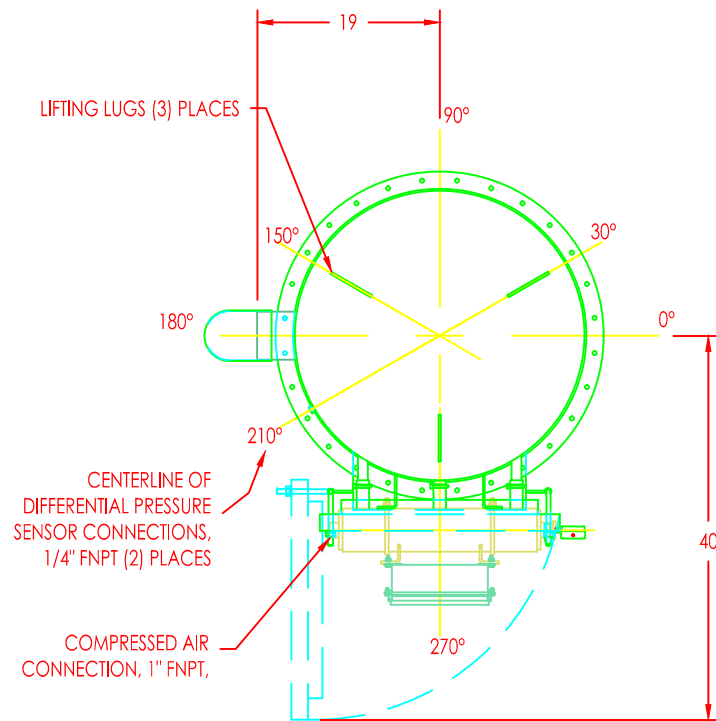


REVISIONS				
REV.	DESCRIPTION	DATE	AUTHOR	CHECKER



MATERIALS LIST		
ITEM	QTY.	DESCRIPTION
1	1	RF9 CLEAN AIR PLENUM, CARBON STEEL
2	3	DIAPHRAGM VALVE, 3/4" NPT
3	1	COMPRESSED AIR MANIFOLD, CARBON STEEL, REF. NOTE 1
4	1	1/4" MNPT DRAIN VALVE
5	1	1" X 1/4" HEX REDUCER, GALVANIZED
6	1	COMPRESSED AIR GAUGE, 0 - 160 PSI
7	1	REVERSE PULSE JET TIMER ASSEMBLY, NEMA 4, REF. NOTE 2
8	1	AIR OUTLET, 5" OD 14 GA. TUBE, CARBON STEEL
9	1	DIFFERENTIAL PRESSURE GAUGE ASSEMBLY, REF. NOTE 3
10	1	TUBE SHEET ASSEMBLY, CARBON STEEL, REF. NOTE 4
11	1	FILTER HOUSING, 12 GA. CARBON STEEL
12	1	HINGED ACCESS DOOR, 18" X 36", CARBON STEEL
13	9	FILTER CARTRIDGE, REF. NOTE 5
14	1	SAFETY GRID, 4" X 4" X 1/4" RND. ROD GRATING, CARBON STEEL
15	1	WEATHERHOOD, AIR OUTLET, 5" OD 14 GA. TUBE, CARBON STEEL

ISSUED FOR CONSTRUCTION

GENERAL NOTES:

- 4.0 SCFM OF CLEAN DRY COMPRESSED AIR 60 - 100 PSIG IS REQUIRED.
- REVERSE JET PULSE TIMER ASSEMBLY INCLUDES ADJUSTABLE PULSE TIMERS AND SOLENOID VALVES PREWIRED TO THE TIMER. THIS ASSEMBLY REQUIRES 120 VOLTS AC, 60 HZ POWER SUPPLY.
- MAGNETIC 0 - 15" WC DIFFERENTIAL PRESSURE GAUGE IS SUPPLIED WITH AIR FITTINGS AN HOSE. THESE PARTS ARE SHIPPED LOOSE FOR INSTALLATION BY OTHERS.
- TUBE SHEET ASSEMBLY INCLUDES GALVANIZED STEEL BAG CUPS AND VENTURIS, IS BOLTED BETWEEN THE PLENUM AND HOUSING FLANGES AND IS SEALED WITH FDA APPROVED SILICONE.
- FILTER CONTAINS 267 SQUARE FEET OF USABLE CLOTH AREA. BOTTOM LOADING FILTER CARTRIDGES, 45 PLEAT SPUN BONDED POLYESTER, 42.76" LONG WITH MOLDED URETHANE TOP AND BOTTOM. FILTER CARTRIDGES AND WORM GEAR CLAMPS. THESE ITEMS ARE SHIPPED LOOSE FOR INSTALLATION BY OTHERS.
- FILTER IS DESIGNED FOR A MAXIMUM EXTERNAL OPERATING DIFFERENTIAL PRESSURE OF 17" HG.
- APPROXIMATE EMPTY WEIGHT OF FILTER: 520 LBS.

JOB:	QTY.	TAG:
FINISH SPECIFICATION	1	LEVEL DESCRIPTION
EXTERIOR SURFACE FINISH	1	STEEL-IT POLYURETHANE ENAMEL
EXTERIOR WELD FINISH	1	WIRE WELD
INTERIOR PRODUCT CONTACT SURFACE FINISH	2	INDUSTRIAL GRADE EPOXY
INTERIOR PRODUCT CONTACT WELD FINISH	0	NO WELD
INTERIOR NON-PRODUCT CONTACT SURFACE FINISH	1	FOOD GRADE OIL COATING
INTERIOR NON-PRODUCT CONTACT WELD FINISH	0	NO WELD

HORIZON SYSTEMS

PO Box 4290 • 1101 Horizon Drive
Lawrence, Kansas, USA 66046-1290
(785) 842-1299 • (800) 842-1600
Fax (785) 842-0181
www.horizonsystemsinc.com

This drawing in design and detail is the property of Horizon Systems, Inc. and shall not be used for any purpose without the written consent of Horizon Systems, Inc. All rights reserved.

INCH - UNLESS OTHERWISE SPECIFIED
MFG. SINGLE PROJECT
FILTER, 45RFC9-II, 17" HG,
CARBON STEEL.

TOLERANCES:
FRACTIONS: < 7/2" ± 1/16
FRACTIONS: ≥ 7/2" ± 1/8
2 PLACE DECIMAL: ± .02
3 PLACE DECIMAL: ± .005
ANGULAR: ± 1°

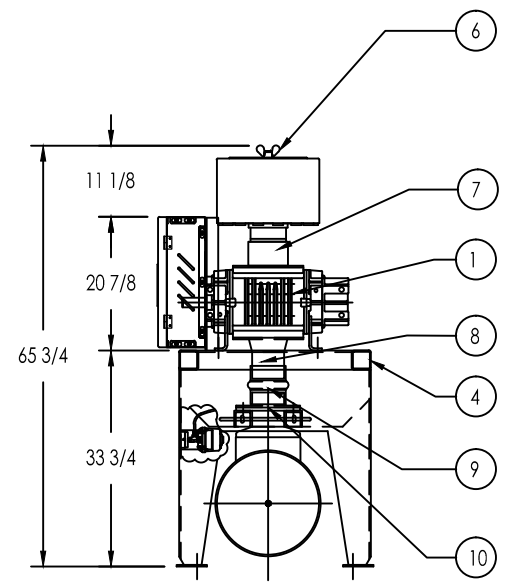
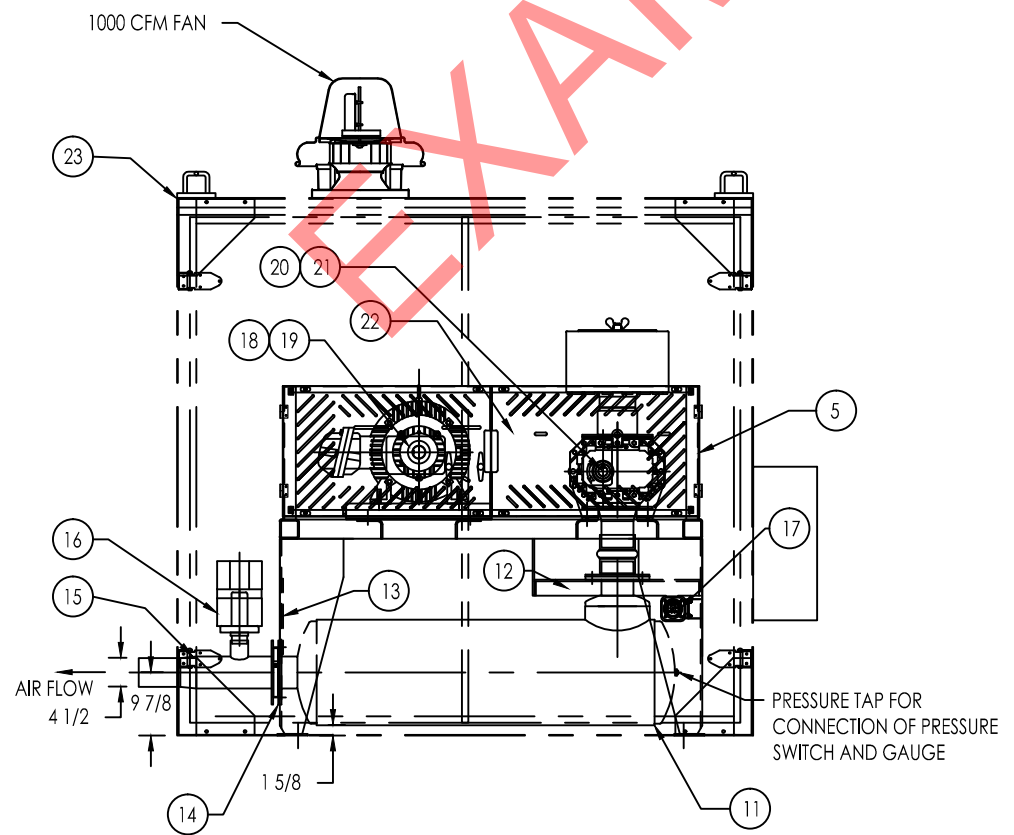
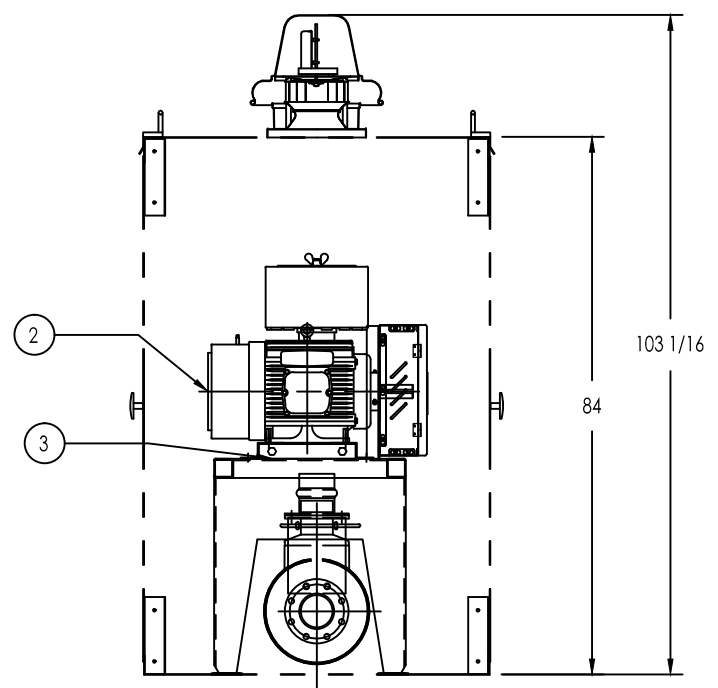
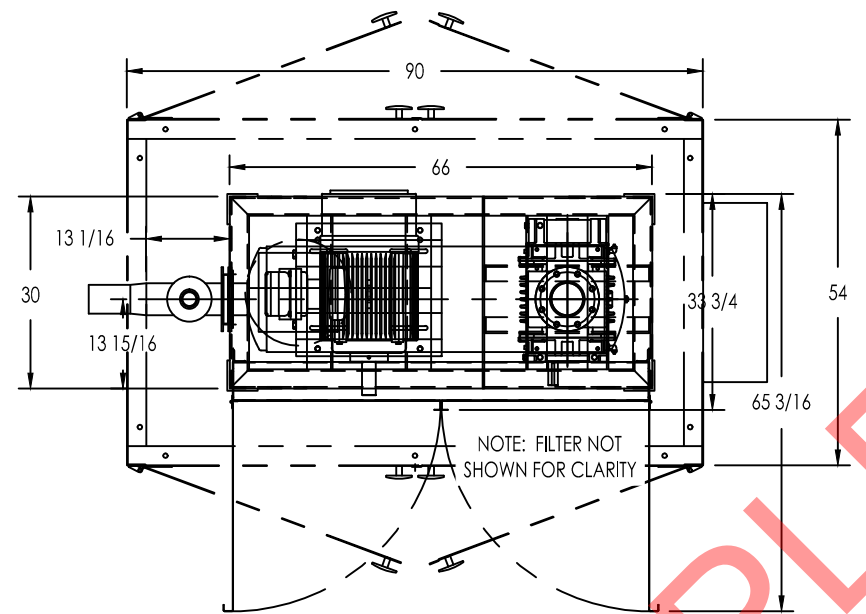
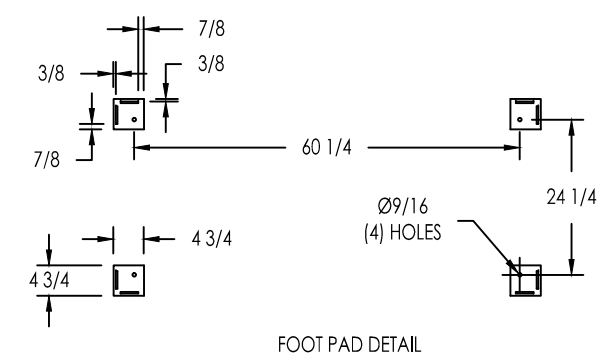
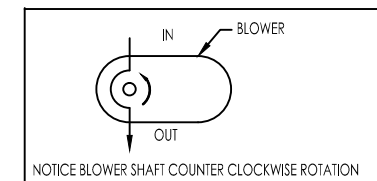
GENERAL DIMENSIONS
JOB NO. DRAWING NO.
ITEM NO. DRAWING STATUS

ENGINEER: KG DRAWN: KG CHECKED: DL SCALE: 1:20 DATE: DO NOT SCALE DRAWING
ISSUED
SIZE: B SHEET: 1 OF 1

REVISIONS				
REV.	DESCRIPTION	DATE	AUTHOR	CHE
A	WAS PBH6, NOW PBH5			RE

MATERIALS LIST		
ITEM	QTY.	DESCRIPTION
1	1	BLOWER, MD-TUTHILL, EQUALIZER RM 4612
2	1	50 HP, 1750 RPM, TEFC, 230/460 VAC, 3 PH, 60 Hz, 326T FRAME
3	1	ADJUSTABLE MOTOR BASE, STYLE B
4	1	PB/VB-SH BLOWER FRAME, CARBON STEEL
5	1	DRIVE GUARD, REMOVABLE DOORS, SWING OPEN ACCESS, CS
6	1	FS-275P-500 INTAKE FILTER/SILENCER, CARBON STEEL HOUSING
7	1	BLOWER INLET TRANSITION, CARBON STEEL
8	1	BLOWER OUTLET TRANSITION
9	1	RIKER HUMP CONNECTOR HIGH TEMP SILICON
10	1	SILENCER INLET TRANSITION
11	1	DISCHARGE SILENCER, STODDARD, D33H-5-9
12	2	SILENCER INLET SUPPORT BRACKETS, CARBON STEEL
13	1	SILENCER DISCHARGE SUPPORT BRACKET, CARBON STEEL
14	1	5" TECHNOCHECK SWING PLATE CHECK
15	1	OUTLET TRANSITION, 5" OD TO 4" SCH. 10, CARBON STEEL
16	1	WEIGHTED PRESSURE RELIEF VALVE, RELIEF SETTING: 14 PSIG
17	1	NEMA 4 PRESSURE SW. WITH GLYCERIN FILLED GAUGE, SET AT 12
18	1	MOTOR SHEAVE, TAPER-BUSHED, 11.3" DIA., 5V2GRV
19	1	MOTOR BUSHING, TAPERED TYPE NO. 3020 2.125" BORE
20	1	BLOWER SHEAVE, TAPER-BUSHED, 8.5" DIA., 5V2GRV
21	1	BLOWER BUSHING, TAPERED TYPE NO. 2517 1.500" BORE
22	2	DRIVE BELTS, 5VX890
23	1	SOUND ENCLOSURE - 6" PRESSURE, ITEM 2-002

- GENERAL NOTES
- BLOWER DESIGN PARAMETERS:
 - FLOW, 592 ICFM
 - PRESSURE, 8.44 PSIG
 - SPEED, ~2,347 RPM
 - POWER, 30.6 BHP AT INPUT, 49.3 BHP AT RELIEF
 - ALL FLANGE CONNECTIONS HAVE 1/8" BLACK GASKETS.
 - WEIGHTED PRESSURE RELIEF VALVE WEIGHTS SHIPPED ATTACHED TO SHIPPING SKID WEIGHT TO BE PLACED ON VALVE AFTER BLOWER IS INSTALLED
 - APPROXIMATE WEIGHT: 1,823 LBS



ITEM: 11796-002-001	QTY. 1	TAG: 2-001
FINISH SPECIFICATION	LEVEL	DESCRIPTION
EXTERIOR SURFACE FINISH	1	STEEL-IT POLYURETHANE ENAM
EXTERIOR WELD FINISH	1	WIRE WELD
DRIVE GUARD SURFACE FINISH	6	SAFETY ORANGE ENAMEL

HORIZON SYSTEMS

PO Box 4290 • 1101 Horizon I
Lawrence, Kansas, USA 66046
(785) 842-1299 • (800) 842-1
Fax (785) 842-0181
www.horizonsystemsinc.com

This drawing in design and detail is the property of Horizon Systems, Inc. and shall not be used for any purpose without the written consent of Horizon Systems, Inc. All rights reserved.

INCH - UNLESS OTHERWISE SPECIFIED

TOLERANCES:
FRACTIONS: $\le 7/8$ ± 1/16
FRACTIONS: $\ge 7/8$ ± 1/8
2 PLACE DECIMAL: ± .02
3 PLACE DECIMAL: ± .005
ANGULAR: ± 1°

SCALE: 1:30

DO NOT SCALE DRAWING

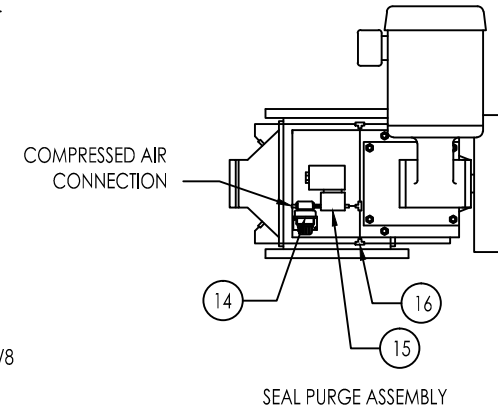
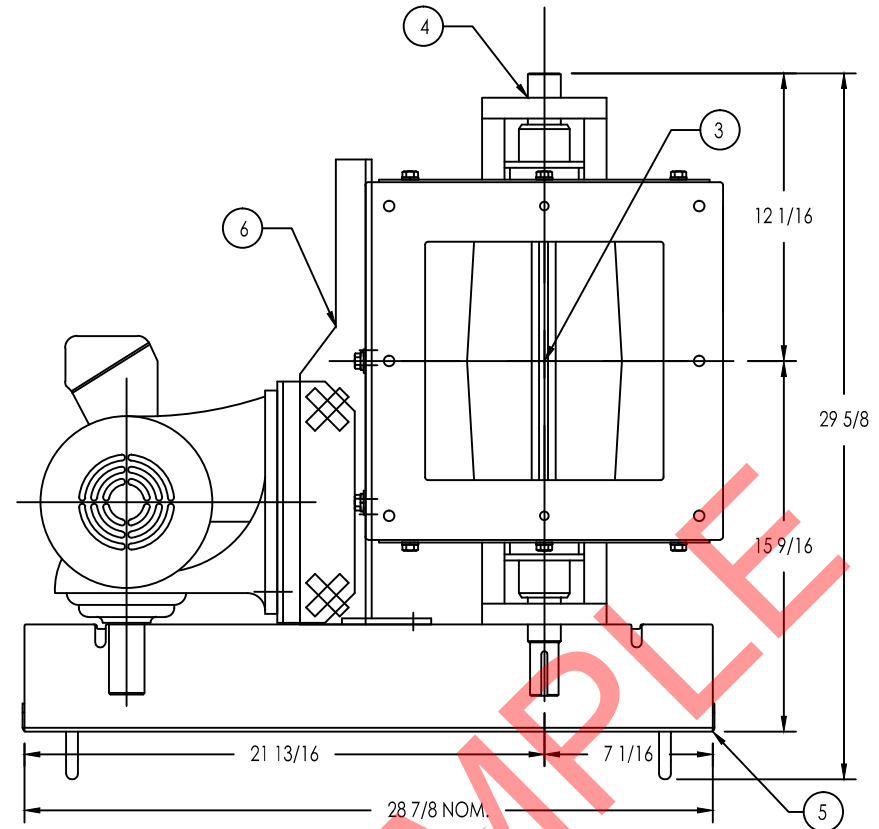
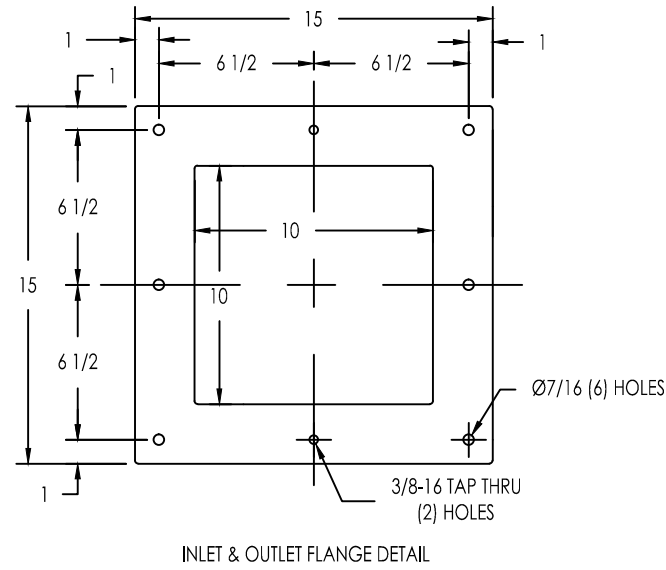
DATE: _____

ENGINEER: _____ DRAWN: _____ CHECKED: _____

ITEM NO. _____ DRAWING NO. _____

ITEM NO. _____ DRAWING STATUS: ISSUED

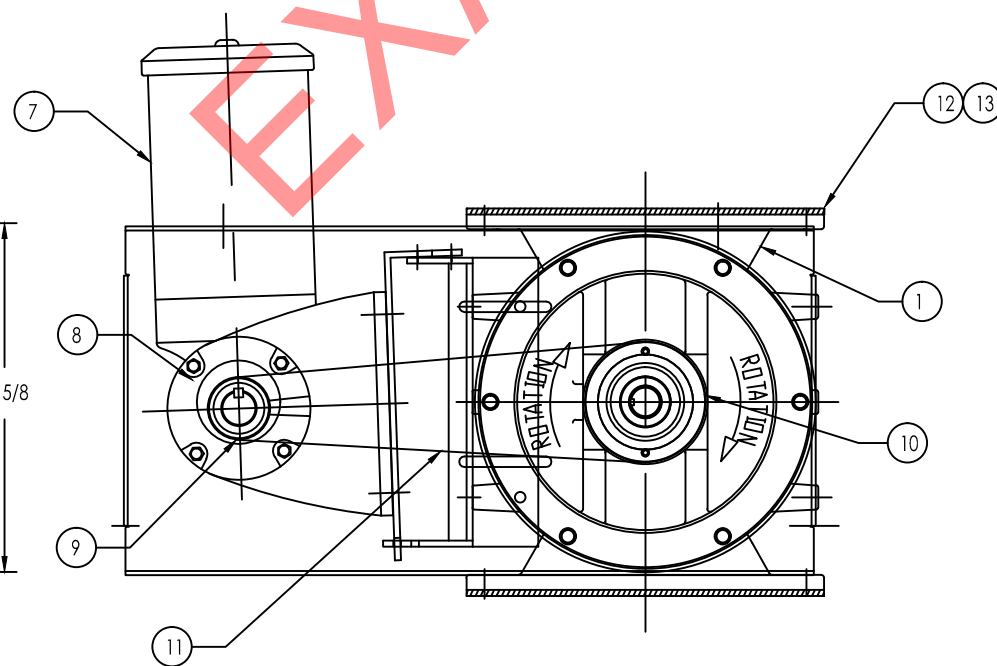
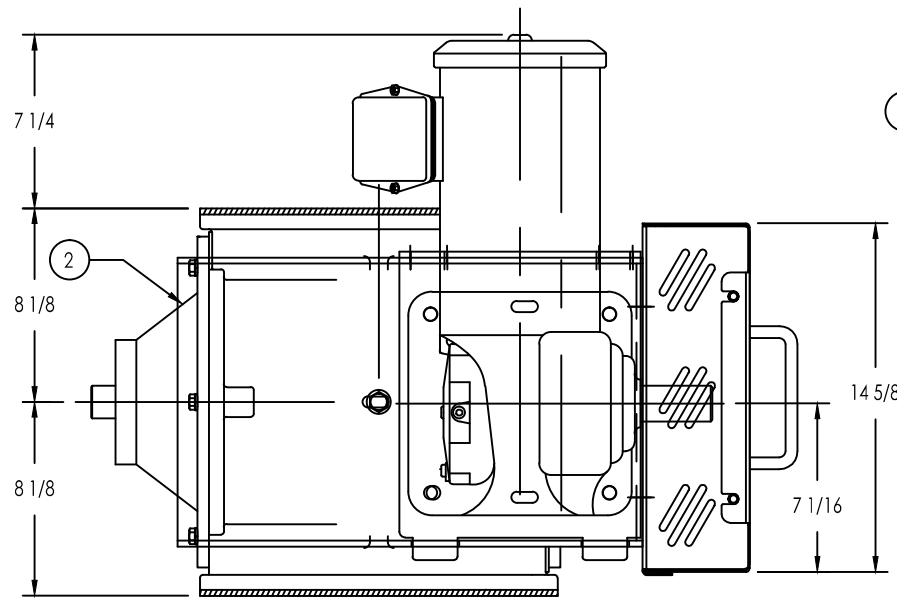
DATE: _____ SHEET: 1 OF 1



REVISIONS				
REV.	DESCRIPTION	DATE	AUTHOR	CHECKED
A	UPDATED DRIVE GUARD PER ECN 0056			

MATERIALS LIST		
ITEM	QTY.	DESCRIPTION
1	1	HOUSING, CAST IRON
2	2	END PLATE, CAST IRON
3	1	8 VANE, OPEN END, RELIEVED TIP, CARBON STEEL ROTOR
4	2	OUTBOARD BEARINGS AND EXTERNAL PACKING TYPE SEALS
5	1	DRIVE GUARD, 14 GA SHEET, CS
6	1	ADJUSTABLE DRIVE MOUNT ASSEMBLY, 1/4" PLATE, CARBON STEEL
7	1	MOTOR MOD E186, 1HP, 143T FRAME, TEFC, 230/460 VAC, 60HZ, 3PH
8	1	GEAR REDUCER E460, 30 RPM OUTPUT
9	1	SPROCKET, BORED TO SIZE, 15 TOOTH, ASA #50, 1.5" BORE
10	1	SPROCKET, BORED TO SIZE, 45 TOOTH, ASA #50, 1.25" BORE
11	48	ROLLER CHAIN, ASA #50
12	2	GASKET, WHITE NEOPRENE, 1/4" THICK
13	2	MOUNTING HARDWARE ASSEMBLY, ZINC PLATED
14	1	PRESSURE REGULATOR, 1/4" FNPT, W/ 0-30 PSI GAUGE
15	1	2-WAY SINGLE SOLENOID VALVE, 1/4 FNPT, 120 VAC, NEMA 4
16	1	1/4" AIR LINE AND FITTINGS

- GENERAL NOTES
1. ROTARY AIRLOCK DISPLACEMENT IS .75 CUBIC FEET PER REVOLUTION AT 100% POCKET FILL.
 2. GEAR MOTOR IS FILLED WITH OIL AT THE FACTORY ACCORDING TO THE MOUNTING POSITION OF THE APPLICATION.
 3. EACH MOUNT HARDWARE ASSEMBLY INCLUDES: (6) 3/8" X 1-3/4" BOLTS, (2) 3/8" X 1-1/4" BOLTS, (8) 3/8" LOCK WASHERS, AND (6) 3/8" NUTS.
 4. APPROXIMATE WEIGHT: 340 LBS
 5. SEAL PURGE REQUIRES 5 CFM COMPRESSED AIR SUPPLY 60-100 PSI. REGULATOR TO BE SET 5 PSI ABOVE DESIGNED CONVEY LINE PRESSURE.



JOB: 11796-002-004	QTY: 1	TAG: 2-004
FINISH SPECIFICATION	LEVEL	DESCRIPTION
EXTERIOR SURFACE FINISH	1	STEEL-IT POLYURETHANE ENAMEL
EXTERIOR WELD FINISH	1	WIRE WELD
DRIVE GUARD SURFACE FINISH	6	SAFETY ORANGE ENAMEL

HORIZON SYSTEMS

PO Box 4290 • 1101 Horizon Drive
Lawrence, Kansas, USA 66046-1290
(785) 842-1299 • (800) 842-1600
Fax (785) 842-0181
www.horizonsystemsinc.com

This drawing in design and detail is the property of Horizon Systems, Inc. and shall not be used for any purpose without the written consent of Horizon Systems, Inc. All rights reserved.

INCH - UNLESS OTHERWISE SPECIFIED

ROTARY AIRLOCK, HST1214-A.1,
1 HP, TEFC, 10 RPM, SHAFT AIR PURGE

GENERAL DIMENSIONS

TOLERANCES:
FRACTIONS: <7/2" ± 1/16
FRACTIONS: ≥7/2" ± 1/8
2 PLACE DECIMAL: ± .02
3 PLACE DECIMAL: ± .005
ANGULAR: ± 1°

JOB NO. STANDARD DRAWING NO.
ITEM NO. Q31214A.1TE10-SP DRAWING STATUS: STANDARD

ENGINEER: DRAWN: CHECKED: SCALE 1:8 DO NOT SCALE DRAWING DATE: SHEET 1 OF 1